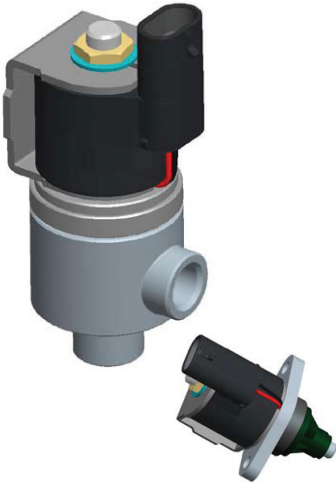


Heated Valve

For Low Temperature Automotive & Industrial Applications



Prevents Freezing

The Parker Heated Valve is a unique product that provides high flow performance for applications where freezing conditions can cause flow restrictions. The orifice is directly heated using self regulating Positive Temperature Co-efficient (PTC) heaters that efficiently prevent freezing or quickly clear blocked flow passages of ice during start-up conditions. Parker positioned the solenoid so that it is isolated from the flow stream, eliminating the potential for freezing in the field.

Features

- Operating temperatures: -40°C to 100°C
- Compact design
- Self regulating PTC heater control
- Heater Power: 50W peak & 8W after 2 minutes (typical performance)
Contact Parker Energy Systems for your specific application
- Flow: Up to 1.0 Cv with 1/4" orifice (other sizes available)
- 1/4" NPT connections standard on stand alone valves (other connections available)
- Cartridge and manifold mount valves available
- 25 PSI max operating pressure on 1/4" orifice
- Low power solenoid with wide range of voltages and coil options
Contact Parker Energy Systems for your specific application
- Chemical compatibility using variety of valve body materials available
- High flow / low restriction valve
- IP 67 compliant

Parker Hannifin Corporation Energy Systems

95 Edgewood Avenue
New Britain, CT 06051

Tel: 877-217-4501
Fax: 866-781-7426

info@parkerenergysystems.com
www.parkerenergysystems.com

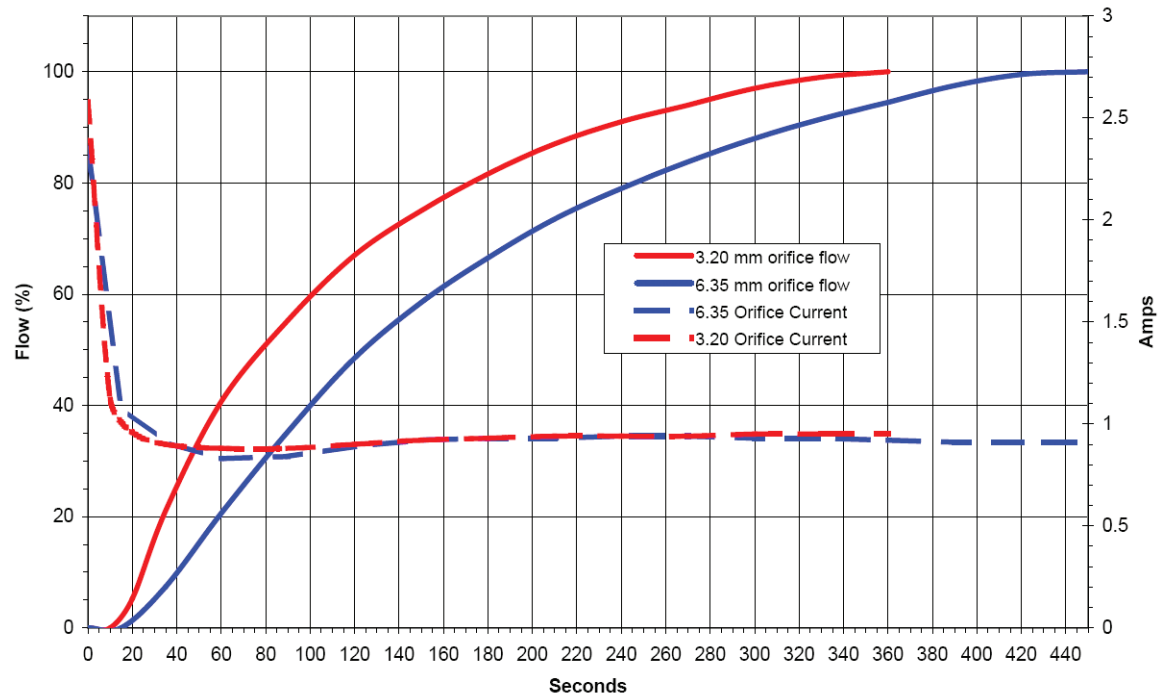


ENGINEERING YOUR SUCCESS.

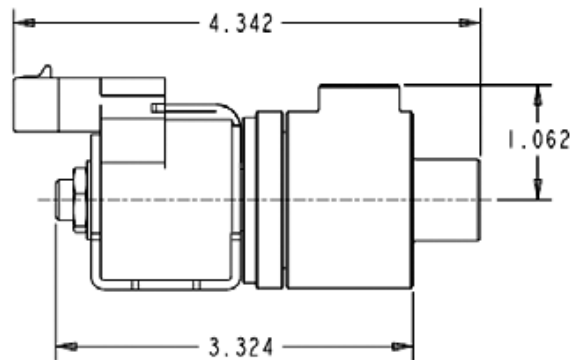
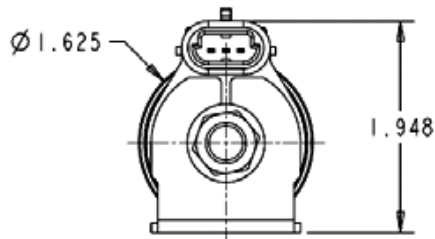
Heated Valve For Low Temperature Automotive & Industrial Applications

Orifice Ice Melt Time

12 VDC applied to heater and -250°C Ambient and Fluid Temperature



Specifications



Ordering Information

Tel: 877-217-4501
Fax: 866-781-7426

info@parkerenergysystems.com
www.parkerenergysystems.com

Rev. 06/2009

ENGINEERING YOUR SUCCESS.

